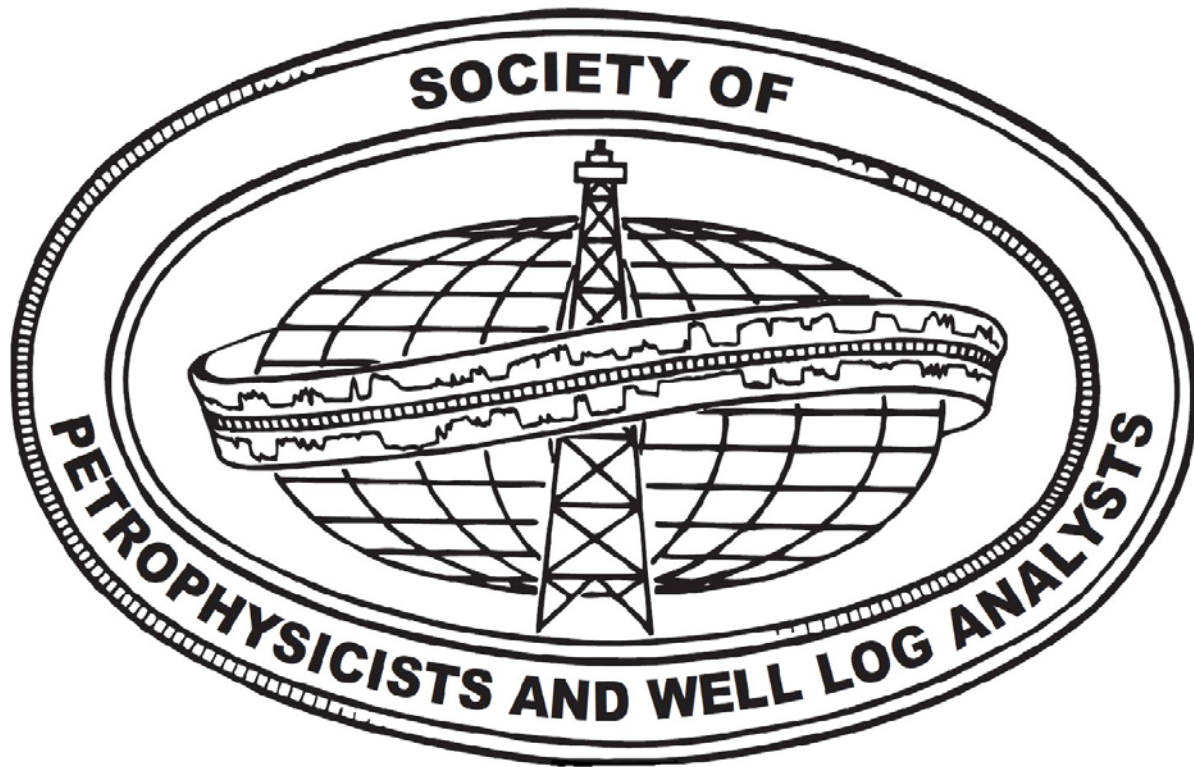


# SPWLA 2018 Spring Topical Conference on

## *Petrophysical Data-Driven Analytics: Theory and Applications*

April 16 - 17, 2018



## [SPWLA 2018 Spring Topical Conference](#)

**Keywords: Machine Learning, Deep Learning, Artificial Intelligence, Petrophysical Interpretation**

April 16 - 17, 2018

SPWLA Training Center (8866 Gulf Freeway, Suite 320, Houston TX 77017)

REGISTRATION FEE: MEMBER \$350. NON-MEMBER \$450. Student \$60

**IN PERSON CONFERENCE FEE INCLUDES:**

Registration Fee

Monday-Tuesday – AM and PM Coffee/Tea and Lunch

**CHAIR:** Chicheng Xu (Aramco Services Company)

**CO-CHAIR:** Irina Borovskaya (SPWLA Houston)

**STEERING COMMITTEE:**

Carlos Torres-Verdin (UT Austin), Jesus M. Salazar (ConocoPhillips), Susan Agar (Aramco Services Company), Jeffrey Hamman (BP), Hesham El-sobky (ConocoPhillips), Peter Tilke (Schlumberger), Jeffery Crawford (Halliburton), Jon Gan (Core Lab), Siddharth Misra (University of Oklahoma), Guangzhi Liao (China University of Petroleum, Beijing)

**SPWLA VP OF EDUCATION:** Zoya Heidari (UT Austin)

### **CALL FOR ABSTRACTS**

The SPWLA 2018 Spring Topical Conference will focus on the same theme of the special issue of Petrophysical Data-Driven Analytics. The committee encourages the SPWLA community to share both theories and applications of the emerging data-driven analytics methods as applicable to petrophysical data analysis, such as machine learning (deep learning) and artificial intelligence. We are seeking submissions on related topics including but not limited to the following areas:

- Interpretation and mapping of geological features
- Reservoir description, characterization, and modeling
- Seismic rock properties or rock physics modeling
- Well and reservoir surveillance
- Operational practices: data acquisition, quality control, standardization, and automation

**Our Policy**

It is the policy of this organization to provide equal opportunities without regard to race, color, religion, national origin, gender, sexual preference, age, or disability.

**Conference attendance seating limited to sixty-five due to room capacity.** Preference will be given to applicants who are willing to present at this topical conference.

Proceedings are “off the record” to encourage sharing of the latest techniques and information. Presentations will typically be 30 minutes (including 10 minutes Q&A). Quoting and (or) recording speakers or their presentations is prohibited.

Commercialism in speaker presentations will not be permitted. Company logos should be limited to the title slide only and used only to indicate the affiliation of the author and co-authors of the presentation.